

8

## Search the gallery

Look for these things. When you find them, write the picture number in the box below.

The 02 Arena  
(Millennium Dome)

The Akin  
Supermarket

A Big Motorbike

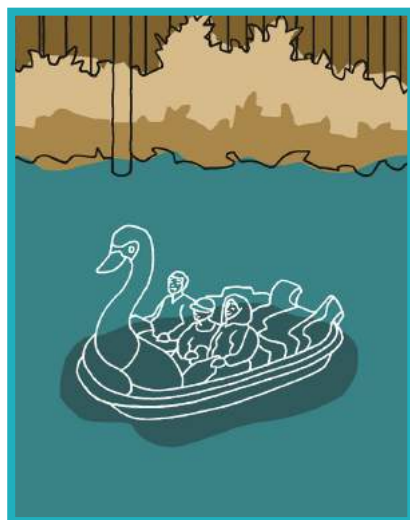
A Canal Barge

A Fox

A Red Taxi

9

## Can you find this boat?



What is the title of the picture?

What does the boat look like?

Where would you like to go by boat?

10

The pictures in the exhibition show lots of different places in London. Which picture would you like to jump into and why?

Which one?

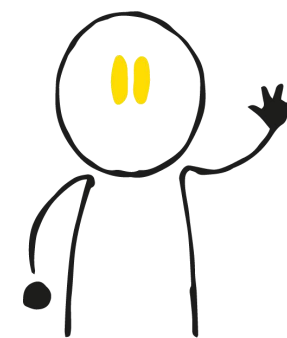
Why?

\_\_\_\_\_

\_\_\_\_\_

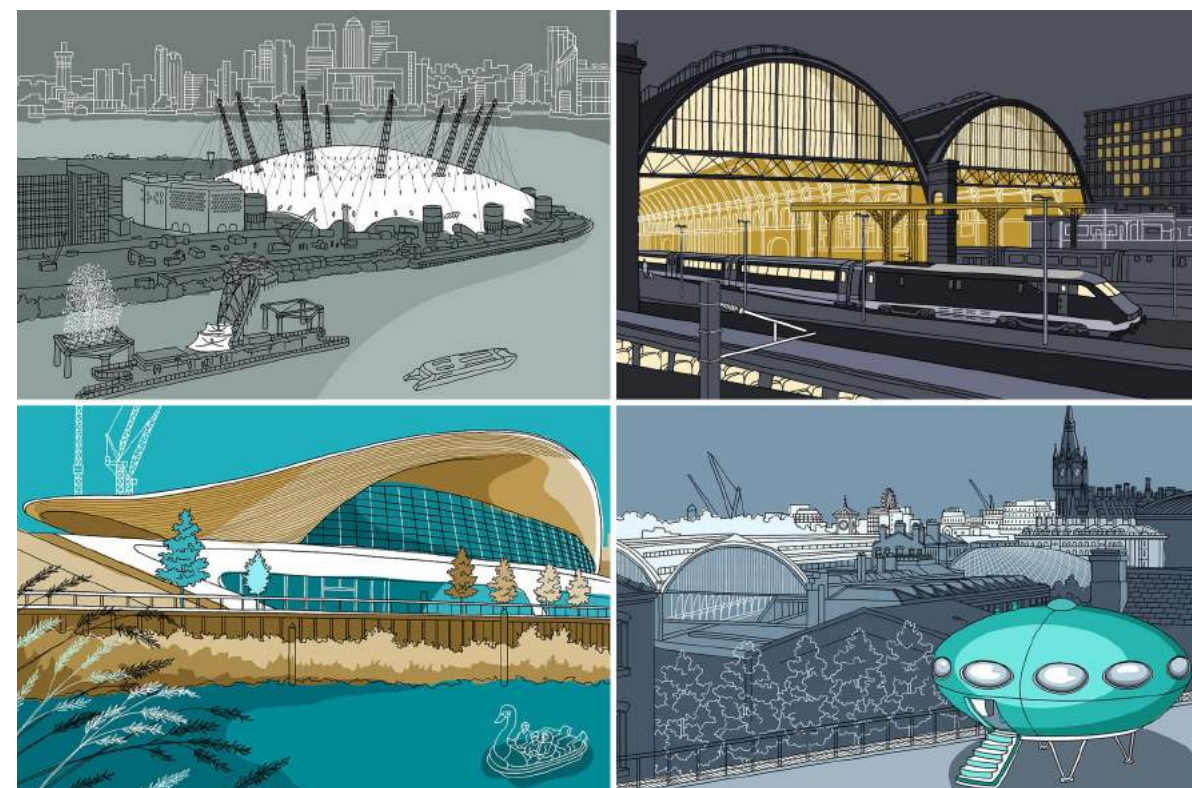
\_\_\_\_\_

Half Moon



## Gallery Trail

Gallery @ Half Moon

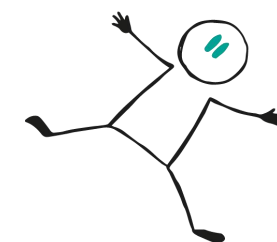


# LINES, SHAPES AND PLACES

*by Jane Smith*

5 January - 16 April 2018

Gallery @ Half Moon schools workshop programme  
generously supported by The Finnis Scott Foundation.



**1** Take a look around the exhibition.

How many bicycles  
can you see?

How many bus  
stops?

How many birds?

How many trains?

**2** Can you find this  
picture?

What number is it?

Tell a friend, parent or  
teacher what you can see.



**3** Can you find the  
number 236 bus  
in the exhibition?

What picture number  
is it?

Where is it going?

Draw a London bus in the box  
on the right.

**4** Look at 'Futuro House and King's Cross  
St. Pancras' (Picture 19).  
Describe what it looks like.

What do you imagine could be inside?

**5** Which is your favourite picture?

I like picture number \_\_\_\_\_  
which is called \_\_\_\_\_

I like it because \_\_\_\_\_

It makes me feel \_\_\_\_\_

**6** Can you find a building in the exhibition  
that you've seen before? What is it called?

**7** Look at 'Finsbury Circus' (Picture 5)  
how many shades of **green** can you see?

In the box on  
the right, draw  
a picture of a  
building with  
just lines. Then  
choose one  
colour to fill  
it in.