

7

### Search the gallery

Look for these things. When you find them in one of the pictures, write the picture number in the box

- Rainbow  Big Ben  Octopus
- Phone  Union Jack  Wave

8

### Look at picture 32

Can you spot the famous London landmark on the sauce bottle? Write the landmark you see below. On the chalkboard nearby, can you draw another London landmark?

---



---

9

### Look at picture 25

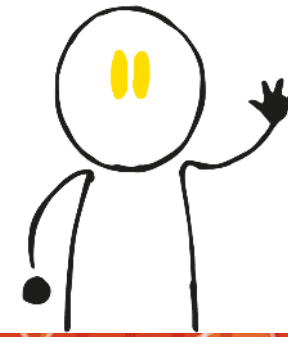
This shows the Queen wearing different masks. In the box, design your own mask.



10

### Look at pictures 1-6

These pictures show animals representing different horoscopes, which link to when you were born. Is your birthday represented? Using the materials on the art cart, can you recreate one of the animals in the pictures?



# Gallery Trail

Gallery @ Half Moon





1

### Look at picture 7

This picture shows yummy treats. What is your favourite snack? Can you draw it on the chalkboard nearby?

---

---

---

2

### Look around at all the pictures

Write the answers to the questions below in the boxes on the right.

How many animals can you see?

How many pictures of the Queen can you see?

3

### Look at picture 8

This picture shows Marmite, which some people love and some people hate to eat. What's one thing you love to eat and one thing you hate to eat? Can you draw them on the chalkboard?

4

### Look around picture 10-14

In these images you can see lots of different superheroes. Have a look at these and then think about what kind of superhero you would be. In the box below write your superhero name:

5

### This is picture 14

You can see Super Woman's logo on her shirt. In the box draw your own superhero logo.



6

### Look around the gallery. Which is your favourite picture?

Can you tell the artist why you like that picture?  
Tell the artist why you like the colours / what's shown in the picture.  
Tell the artist how the picture makes you feel.

Hello! I like picture number \_\_\_\_\_  
which is called \_\_\_\_\_

I like it because \_\_\_\_\_

It makes me feel \_\_\_\_\_

---

---

---